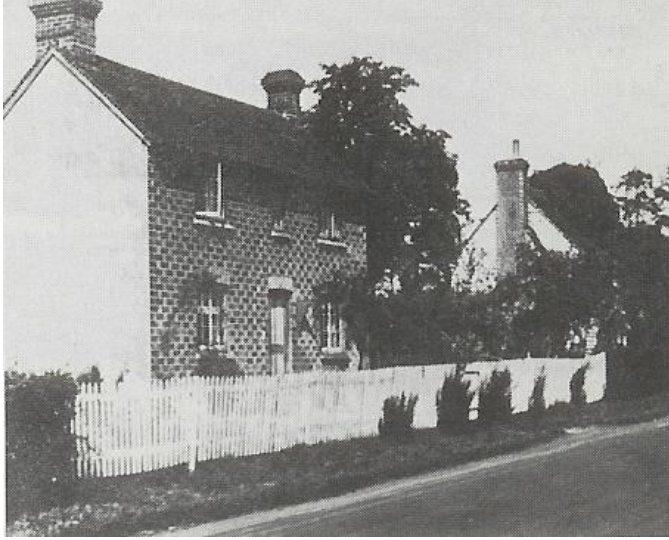


PLOUGH AND HARROW



This beerhouse was between Colcot and the Old School, to the left of the entrance to Great House Farm. Around 1840 it was kept by Richard Grinsted, who was called a "huckster" or "higgler" (pedlar).

The gable end and large chimney of the Plough and Harrow can be seen at the right of this 1910 picture, next to Colcot (opposite the Junior School).